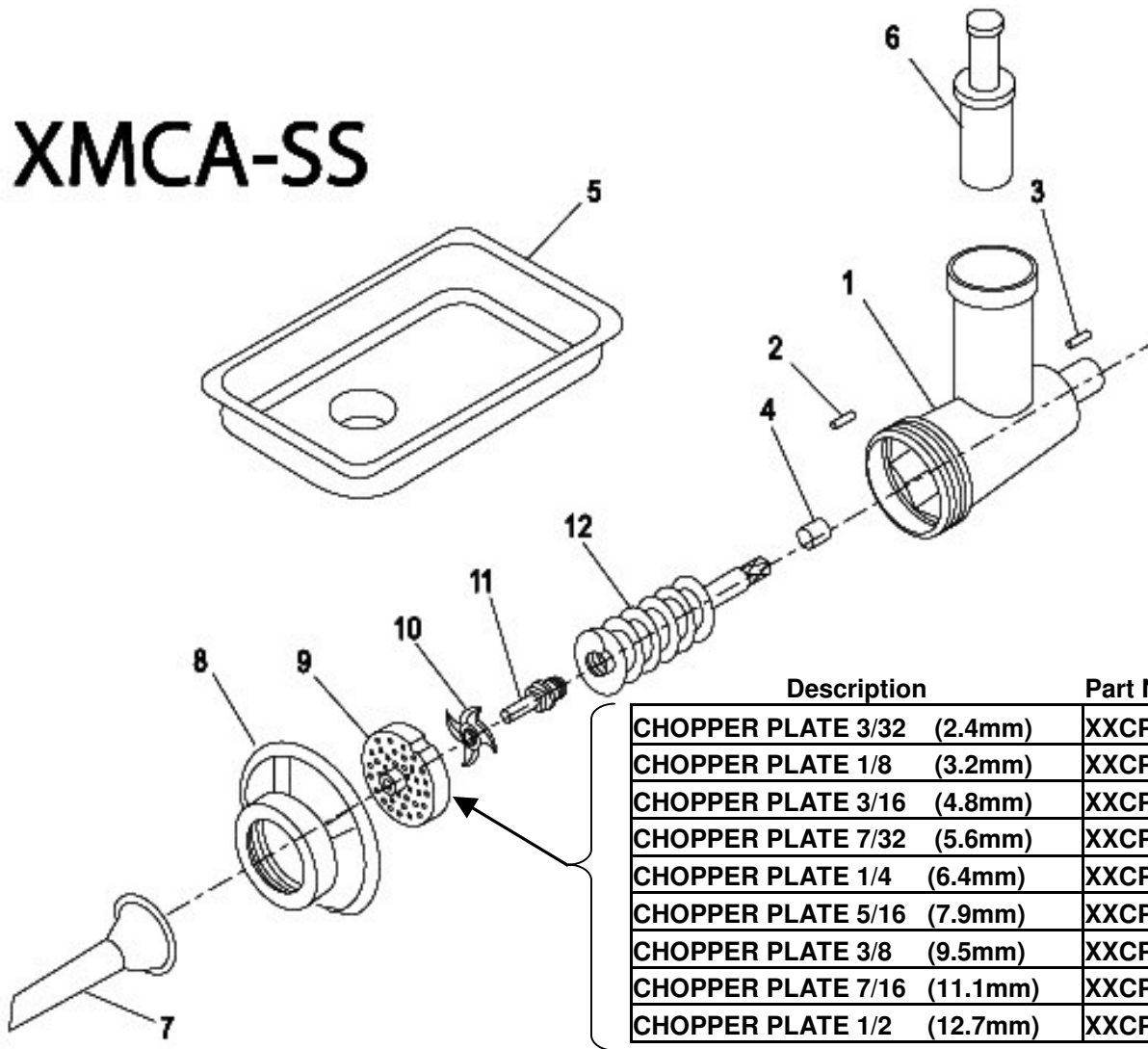




XMCA-SS Meat Grinder Attachment

Tech Support
1-866-260-0522

XMCA-SS



| Item | Description | Qty | Part Number |
|------|---|-----|-------------|
| 1 | CYLINDER ASSEMBLY | 1 | XVS1203-05 |
| 2 | LOCK PIN (included in assembly) | 1 | XVS1212 |
| 3 | LOCK SCREW (included in assembly) | 1 | XVS1203 |
| 4 | BUSHING (included in assembly) | 1 | XVS1205 |
| 5 | TRAY | 1 | XVS1202 |
| 6 | PUSHER | 1 | XVS1201 |
| 7 | STUFFING TUBE | 1 | XVS1210 |
| 8 | PLATE RETAINER (Tighten, then back off 1/8 to 1/4 turn) | 1 | XVS1211 |
| 9 | CHOPPER PLATE (See Detail Above) | 1 | SEE ABOVE |
| 10 | CHOPPER KNIFE | 1 | XVSCK |
| 11 | KNIFE LOCK | 1 | XVS1207 |
| 12 | SCREWSHAFT ASSEMBLY | 1 | XVS1206-07 |